



PRODUCT ADVANTAGES

- ▲ Allows working in complete safety on a wide range of vertical structures : ladders, pylons, wind turbines, roof access, ...
- ▲ Automatic engagement of the carriage with the cable, even when wearing gloves
- ▲ Continuous guidance of the cable: the operator does not have to replace the cable in the guide supports after use
- ▲ Includes a tension control device
- ▲ Energy absorber at the top, reusable after loading.
- ▲ Made entirely of stainless steel



BLOCKING MOBILE CARRIAGE

The CMB carriage allows going through the intermediate supports at a distance. The carriage ensures a unidirectional blocking.

The connection of the carriage can be done at any point on the cable.

Certified EN 353-2 without textile shockabsorber.

Automatic engagement on the cable at the bottom part without removing the karabiner.



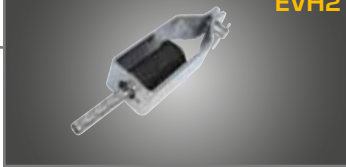
CMB



COMPONENTS VERTILIGNE®

Upper part

EVH2



Crimped upper part. Its elastomer component contributes to energy absorption.

PHR

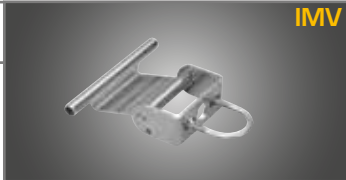


Extension piece

Attaches to the top of the ladder. Facilitates passage of the ladder operator onto the roof.

Mobile intermediate piece

IMV



Gives freedom of movement when travelling. Delivered with 3 sizes of staples to adapt to the ladder tread.

Top fixing support

Allows the fixing on top of the ladders. Compatible with different types of ladder uprights.

Fixed intermediate piece

IFV



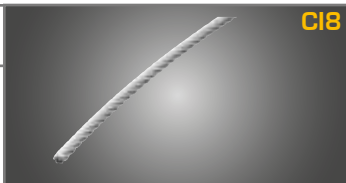
Delivered with 3 sizes of staples to adapt to the ladder tread.

SVH



Cable

CI8



8mm , 7x7 stainless steel cable. VERTIC Bolduc incorporated in the core of the cable for better traceability.

SHL4



Bottom fixing support

Adjustable support for bottom fixing. Compatible with several sizes of uprights.

Lower part

EVB3



Pretensions the cable and enables rapid attachment of the carriage at the bottom of the system.

SHL1



Tubular mast fixings

Standard parts usable as top or bottom parts. Adjustable model to suit the diameter of the mast.

Safety sign

PS.V



Must be installed at the access of the system. Allows the identification and the control of the system.

BAG01 / ESC8



Cable-locking piece

Permits curves and direction changes. Available in removable or crimped versions.